



CURef Usage via WebVPN or VPN Client



CURef or CU Reference Databases are mostly sources subscribed by Center of Academic Resources (CAR), Chulalongkorn University (CU) for CU users that are current students, faculty, and staff of CU services. CU users can access to databases on CURef via Chulalongkorn University network (CUNET), within CU. For off-campus access, users need to use WebVPN or VPN Client which is a service of Office of Information Technology, CU.

WebVPN

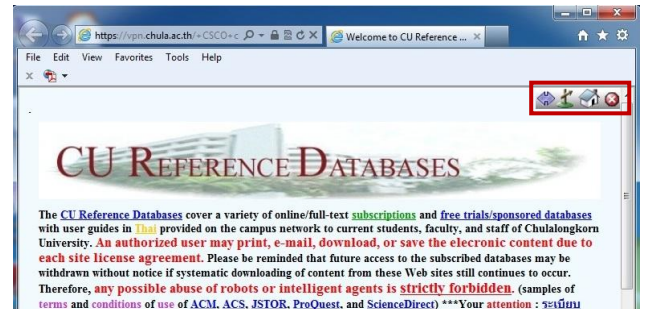
How to use CURef via WebVPN

1. Go to <https://vpn.chula.ac.th>

The screen is shown as the following picture.



Chulalongkorn University Web VPN Services

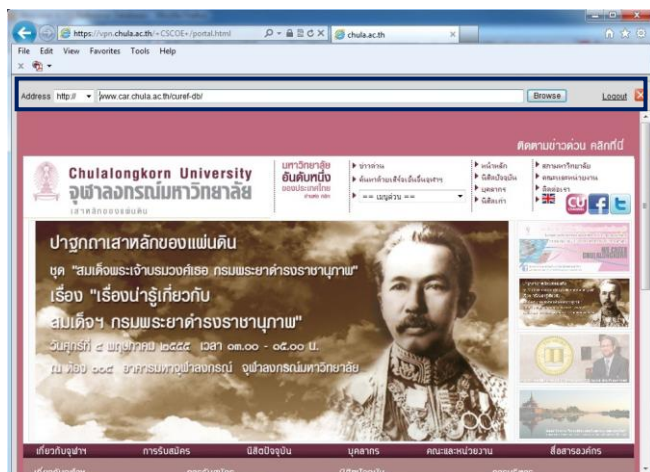


WebVPN Tools

1. Click to move tools to other side
2. Click to go to address, enter URL/ web address in the box and click OK
3. Click to go to home page www.chula.ac.th
4. Click to log out from WebVPN

2. Enter USERNAME and PASSWORD with the same username and password used on user identification and authentication system for access within the campus and click Login

3. Type CURef address, www.car.chula.ac.th/curef-db, in WebVPN browser and click Browse



4. Access to CURef as within the campus

VPN Client

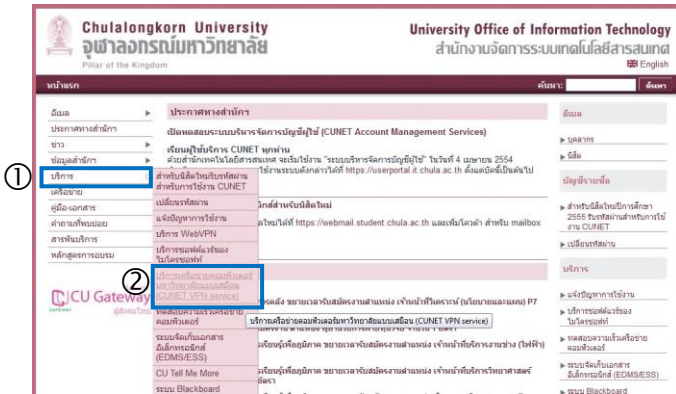
Users need to prepare the computers, for Windows, that would be installed Cisco AnyConnect VPN Client system requirement as follows

1. Admin rights
2. Windows XP SP2 and SP3, Windows Vista SP1 with KB952876, Windows Vista SP2, or Windows 7 operating system supports
3. Central processing unit efficiency isn't lower than Pentium Processor x86, 32-bit, or x64, 64-bit.
4. Hard disk area isn't lower than 5 MB.
5. Memory area isn't lower than 256 MB for Windows XP, and 512 MB for Windows Vista or Windows 7.
6. Microsoft Installer program version 3.1, or higher, installed on computer.

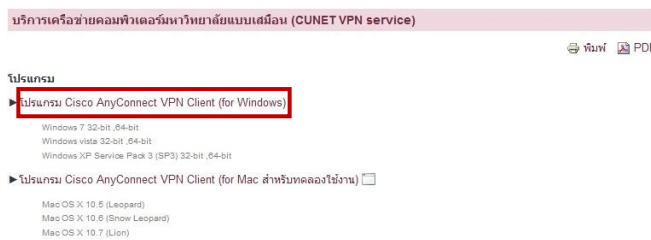
Download and Installation VPN Client program

1. Go to www.it.chula.ac.th

2. Go to service and click CUNET VPN service



3. Click Cisco AnyConnect VPN Client program (for Windows)



4. Enter User name and Password with the same username and password used on user identification and authentication system for access within the campus and click OK



5. Click Run to run setup program and click Next



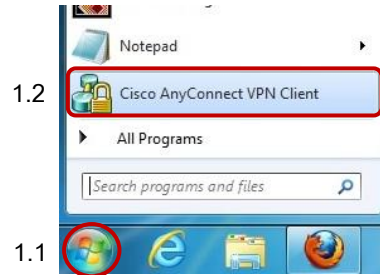
6. Select I accept the terms in the License Agreement and click Next

7. Click Install

8. Click Finish

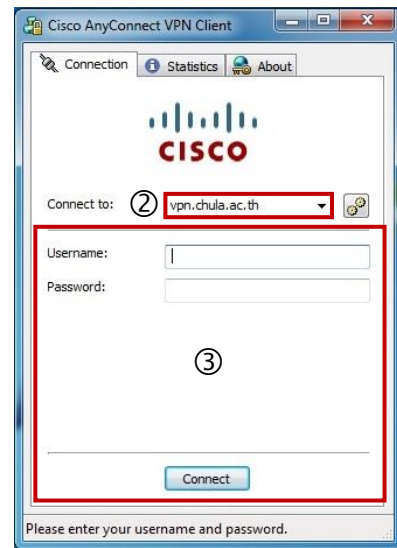
Run Cisco AnyConnect VPN Client program

① Click Start button and click Cisco AnyConnect VPN Client




② Type vpn.chula.ac.th in the box and click Select

③ Enter Username and Password with the same username and password used on user identification and authentication system for access within the campus and click Connect



④ Open browser and go to www.car.chula.ac.th/curef-db and then access to CUREf as within the campus



⑤ Double click , click tab Connection, and click Disconnect to disconnect to VPN Client after finishing

